

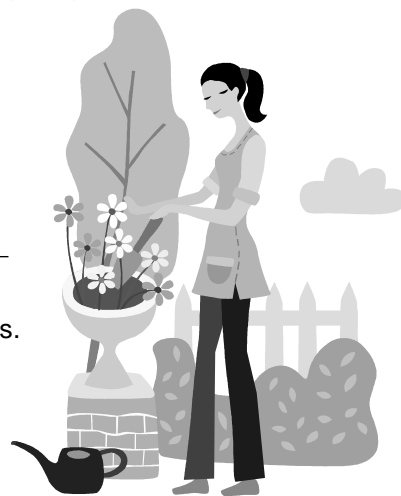
The Great Plant Escape (Part 1)

From my teacher website: "Botany Website #3": <http://urbanext.illinois.edu/gpe/gpe.html>
(or type "The Great Plant Escape" into Google)

Case 1: In Search of Green Life

1. Goals

- List the important things needed for plant _____
- Help in the growth of a living _____
- Demonstrate knowledge and use of words related to _____ and plants.
- Read to find answers to questions.
- Describe and record _____
- Listen for answers and new _____
- Describe how plants grow and what they need to _____
- Make guesses about _____ and its growth (time, size, color, etc.)



2. What are the seven basic requirements plants need to grow properly?

3. For each description, determine whether it applies to an: **Annual**, **Perennial**, **Biennial**

- _____ Needs two growing seasons to complete life cycle
- _____ Can live for three or more years
- _____ Grows, flowers and dies in one season
- _____ Carrots
- _____ Tomato
- _____ Roses

4. What are the two types of root systems plants can have? _____

5. What are the jobs of xylem _____ and phloem? _____

6. Sketch a compound leaf:

7. Where does photosynthesis take place? _____

Photosynthesis requires light, carbon dioxide, chlorophyll and _____

8. What is the pistil made of? _____

9. What part of the flower produces pollen? _____

10. The fertilized ovule becomes the _____

11. A fruit is really a ripened _____

13. What is the short term food supply for the plant embryo called? _____

14. Plants with one cotyledon are called _____, plants with two are _____

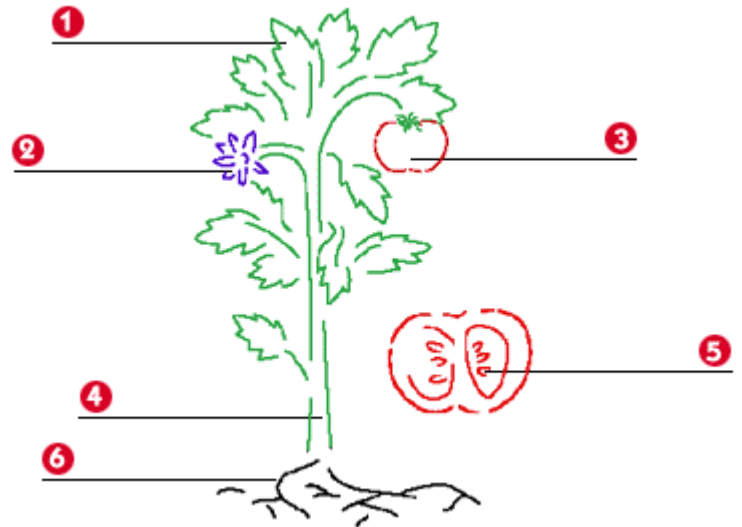
15. What are the three most important plant nutrients? _____

Mysteries

16. Carries water and food through the plant. **A** Stem **B** Leaves **C** Roots **D** Flower **E** Fruit **F** Seed
17. Carries and protects the seed. **A** Stem **B** Leaves **C** Roots **D** Flower **E** Fruit **F** Seed
18. Allows the plant to reproduce. **A** Stem **B** Leaves **C** Roots **D** Flower **E** Fruit **F** Seed
19. Helps the plant to produce seeds. **A** Stem **B** Leaves **C** Roots **D** Flower **E** Fruit **F** Seed
20. Made of the blade and the petiole. **A** Stem **B** Leaves **C** Roots **D** Flower **E** Fruit **F** Seed
21. Take up nutrients and water. **A** Stem **B** Leaves **C** Roots **D** Flower **E** Fruit **F** Seed

22. Label the diagram

- 1) _____
- 2) _____
- 3) _____
- 4) _____
- 5) _____
- 6) _____



23. What is on Sprout's list of annuals?

24. What part of the plant do we eat? List one example for each part.

Roots _____ Seeds _____

Fruits _____ Flowers _____

Leaves _____ Stems _____

Case 3 – Is It Dust, Dirt, Dandruff, or a Seed

1. Objectives

- Talk about the importance of _____.
- Tell what is needed for a seed to _____.
- Describe the differences in seeds and tell how they _____.
- Describe _____ plants that produce seed-like structures (mushrooms, ferns).
- Describe a seed's structure and what's needed for seed _____.
- List seeds that are used for _____.

2. Parts of the Seed – List what each of the following does:

Cotyledon _____

Endosperm _____ Seed Coat _____

3. What do seeds need in order for germination to occur? _____

4. What do nonflowering plants produce instead of seeds? _____

5. Name two types of seeds that are used as food (think on your own, the site does not list these): _____